
Str. Atomistilor nr. 409, Magurele, Judetul Ilfov, Tel: +40.21.404.23.03
Fax: +40.21.457.44.40, E-mail: ursui@nipne.ro, dseuleanu@fdcl.eu

The future is coming faster

ELI – NP CLEVER *MHTC Training center*

Str. Atomistilor nr. 409, Magurele, Judetul Ilfov, Tel: +40.21.404.23.03
Fax: +40.21.457.44.40, E-mail: ursui@nipne.ro, dseuleanu@fdcl.eu

Who are we?

33 SMEs

13 national
research
institutes

2
financing
agencies

55 ENTITIES

2 local
administrations

5 associations
and
foundations

What specificities do we have?

1. It is set up around ELI – NP Project – the largest EU investment in large research infrastructure in Central and Eastern Europe
2. IT is bottom up initiative
3. It is a Science driven Cluster
4. Around 30% of the Romanian research is done on Magurele Campus

ELI-Nuclear Physics Facility



www.eli-np.ro



Funding (Structural Funds): 293 M€
approved in Sept. 2012

Projected completion date: 2018

Building: under construction

Current staff: ~ 50

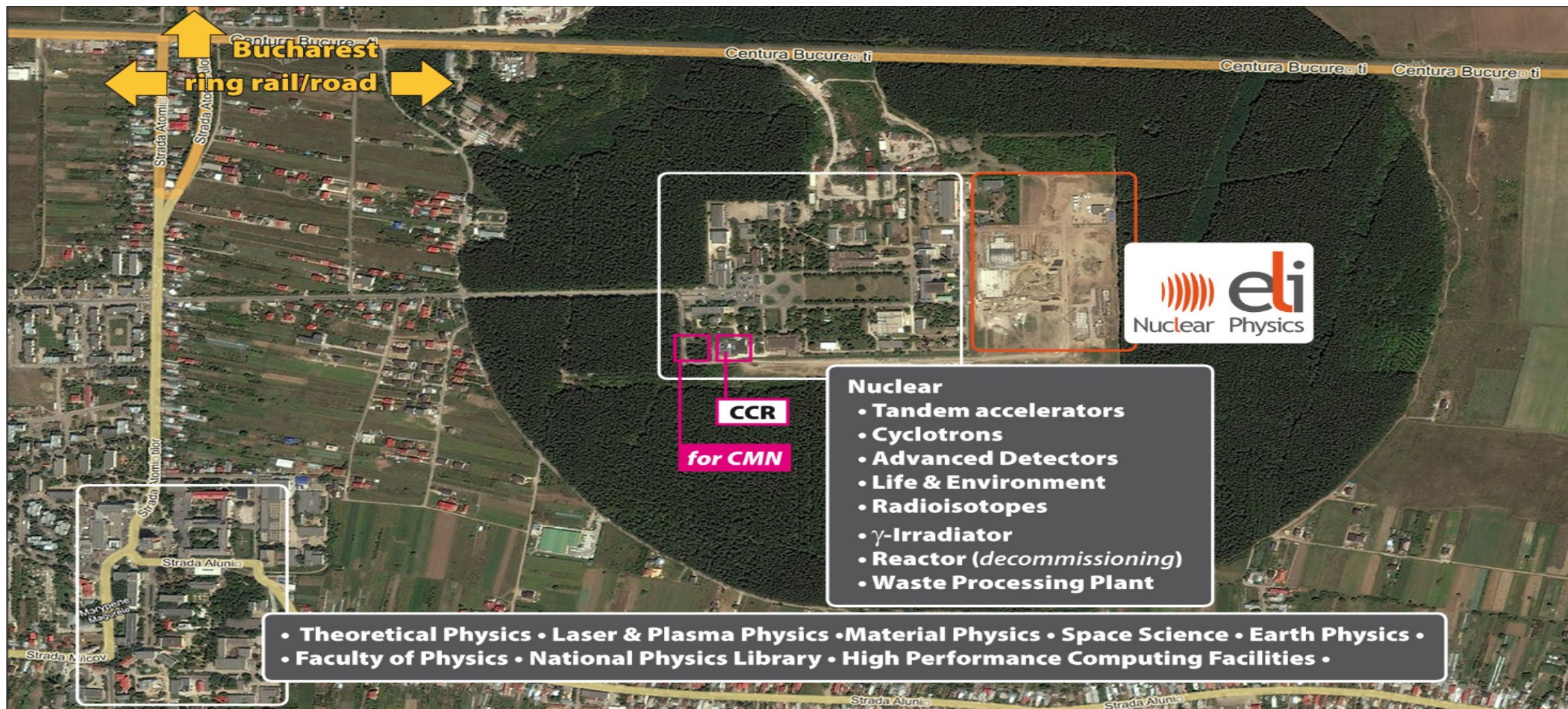
Major equipment procured

- Laser System (two 10PW lasers)
- Gama System

Technical Design Reports
Currently under preparation

Built in Magurele, Romania, the **ELI Nuclear Physics (ELI-NP)** facility is based on a very high intensity laser system (two 10 PW lasers coherently added to reach high intensities [10^{23} - 10^{24} W/cm²]) and a very intense, brilliant gamma beam. Due to the unique combination of these instruments worldwide, ELI-NP will tackle a wide range of research topics in fundamental physics, nuclear physics and astrophysics and also researches towards applications in materials science, life sciences, management of nuclear materials.

Magurele Campus: National Physics Institutes



Str. Atomistilor nr. 409, Magurele, Judetul Ilfov, Tel: +40.21.404.23.03
Fax: +40.21.457.44.40, E-mail: ursui@nipne.ro, dseuleanu@fdcl.eu

ELI – NP CLEVER

The Training Centre

- Center is set up for the entities participating in the cluster
- This cluster's activity is grafted on the Training Center in Applied Physics member of the European Nuclear Education Network
- Main concern is to ensure a high standard level of training for the staff of all members as a way to bring to reality The Cluster's Goal:
Excellency in business!

ELI - NP CLEVER has four operational ways:

- a) face to face training*
- b) educational events abroad
- c) e-learning platform
- d) mentoring / coaching.

Training plan include :

- 1) **General courses** are dedicated to answer to the following questions: How to make knowledge development more attractive for SMEs? How to transform knowledge in advanced technologies? How to find clients for advanced technologies in a competitive world? How to approach the research as the newest and the most effective industry of Romania?
 - ✓ Business management; Innovation management; Crisis management; Marketing; Public Relations; Intellectual property;
 - ✓ Public procurement

2) Expert Training

- performed at the CPSDN
- using the expert lecturers from:
 - the Faculty of Physics
 - from the research institutes from Magurele Campus
- practical training being pursued at state of the art research laboratories belonging to IFIN-HH and to the other national physics institutes from the Campus.

Str. Atomistilor nr. 409, Magurele, Judetul Ilfov, Tel: +40.21.404.23.03
Fax: +40.21.457.44.40, E-mail: ursui@nipne.ro, dseuleanu@fdcl.eu

Expert Training Centre in Applied Physics

CPSDN

(<http://cpsdn.nipne.ro/>)

Located at the Magurele Campus, Romania's National Physics Lab, the Nuclear Training Centre (CPSDN) of IFIN-HH is pursuing personnel training/specialisation in the nuclear field and in related areas. Its activity is devoted to the development of human resources towards nuclear and radiological applications, tailoring its training activities for the implementation of research results obtained by the research institutes and academia from Magurele.

Member of ENEN (the European Nuclear Education Network)



Str. Atomistilor nr. 409, Magurele, Judetul Ilfov, Tel: +40.21.404.23.03
Fax: +40.21.457.44.40, E-mail: ursui@nipne.ro, dseuleanu@fdcl.eu

Training programmes are constantly adapted to:

- ☐ particular training objectives
- ☐ level of participants' knowledge
- ☐ specific regulatory requirements
- ☐ modern e-learning procedures



Str. Atomistilor nr. 409, Magurele, Judetul Ilfov, Tel: +40.21.404.23.03
Fax: +40.21.457.44.40, E-mail: ursui@nipne.ro, dseuleanu@fdcl.eu



CPSDN is developing:

- Post-secondary and post-graduate training for personnel involved in practices with ionizing radiation sources or advanced physical techniques such as lasers and vacuum technique
- training for occupationally exposed workers and specialized training for personnel involved in nuclear research

Proposals for the participants:

1. To develop a join package of training programs organized in the best facility of our group all over Europe and with the best trainers in the world for research and technical skills.
2. To work together for developing an aggressive business oriented approach of our managers member in the clusters (simulations, war games etc.).
3. To team up researchers with managers and business persons for understanding each other and developing innovative products.
4. To set up together an incubator for innovative SMEs on Magurele Campus as part of the EU Strategy for Danube Region; Romania has an incentive program to finance such initiatives.



Str. Atomistilor nr. 409, Magurele, Judetul Ilfov, Tel: +40.21.404.23.03
Fax: +40.21.457.44.40, E-mail: ursui@nipne.ro, dseuleanu@fdcl.eu

Thank you for your attention!

Dragos Seuleanu – CEO
(dseuleanu@fdcl.eu ; +40 744 312-651),
www.mhtc.ro